



# FDT100VG

## Standard Inverter Cassette

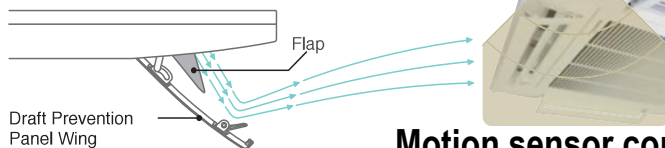


### Individual flap control system



According to room temperature conditions, four directions of air flow can be controlled by individual flap as preferred. Individual flap control is available even after installation

### Draft prevention panel



### Motion sensor control

### Wired remote control (option)

### Wireless remote control (option)

NEW



RC-EX3



RC-E5



RCH-E3

NEW



RCN-TC-24W-E2



FDC100VNP (4.0HP)

### FUNCTIONS

#### Energy saving



#### Air flow



#### Comfort & Convenience



#### Others



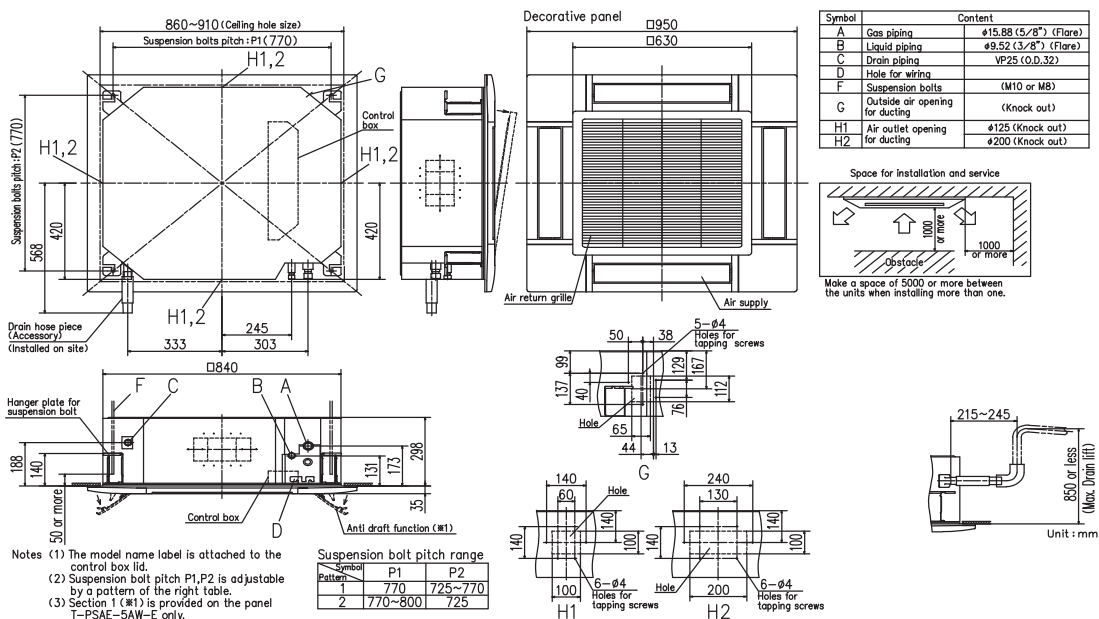
		Standard Inverter		
Set model name		FDT71VNPVG	FDT90VNPVG	FDT100VNP1VG
Indoor unit		FDT71VG	FDT100VG	FDT100VG
Outdoor unit		FDC71VNP	FDC90VNP	FDC100VNP
Power source		1 Phase 220-240V, 50Hz / 220V, 60Hz		
Nominal cooling capacity (Min~Max)		kW 7.1 ( 1.4 ~ 7.1 )	9.0 ( 1.9 ~ 9.0 )	10.0 ( 2.8 ~ 11.2 )
Nominal heating capacity (Min~Max)		kW 7.1 ( 1.0 ~ 7.1 )	9.0 ( 1.5 ~ 9.0 )	11.2 ( 2.5 ~ 12.5 )
Power consumption	Cooling/Heating	kW 2.50 / 1.90	2.67 / 2.19	2.76 / 2.84
EER/COP	Cooling/Heating	2.84 / 3.74	3.37 / 4.11	3.62 / 3.94
Inrush current		A 5	5	5
Max. current		14.5	18.0	21.0
Sound power level*1	Indoor	Cooling/Heating 62 / 62	63 / 63	63 / 63
	Outdoor	Cooling/Heating 67 / 67	69 / 69	70 / 70
Sound pressure level*1 *2	Indoor	Cooling (Hi/Me/Lo) dB(A) 35 / 34 / 29	39 / 37 / 31	39 / 37 / 31
		Heating (Hi/Me/Lo) 35 / 34 / 29	39 / 37 / 31	39 / 37 / 31
	Outdoor	Cooling/Heating 54 / 54	57 / 55	57 / 61
		Cooling (Hi/Me/Lo) 18 / 15 / 12	26 / 23 / 17	26 / 23 / 17
Air flow *2	Indoor	Heating (Hi/Me/Lo) m <sup>3</sup> /min 18 / 15 / 12	26 / 23 / 17	26 / 23 / 17
		Cooling/Heating 36 / 36	63 / 49.5	75 / 79
	Outdoor	Cooling/Heating		
Exterior dimensions	Indoor	Unit: 236 x 840 x 840 Panel: 35 x 950 x 950	Unit: 298 x 840 x 840 Panel: 35 x 950 x 950	
	Outdoor	HeightxWidthxDepth mm 640 x 800(+71) x 290	750 x 880(+88) x 340	845 x 970 x 370
Net weight	Indoor	kg 26(Unit:21 Standard Panel:5)	30(Unit:25 Standard Panel:5)	
	Outdoor	45	57	70
Ref.piping size	Liquid/Gas	ømm 6.35(1/4") / 12.7(1/2")	6.35(1/4") / 15.88(5/8")	
Refrigerant line (one way) length			Max.30	
Vertical height differences	Outdoor is higher/lower		Max.20 / Max.20	
Outdoor operating temperature range	Cooling		-15~46*3	
	Heating		-15~20	
Panel		T-PSA-5AW-E, T-PSAE-5AW-E		
Air filter, Q'ty		Pocket Plastic net x1(Washable)		
Remote control (option)		wired:RC-EX3, RC-E5, RCH-E3 wireless:RCN-T-5AW-E2		



# FDT100VG

Standard Inverter Cassette

## FDT100VG Indoor Unit



## FDC100VNP Outdoor Unit

